

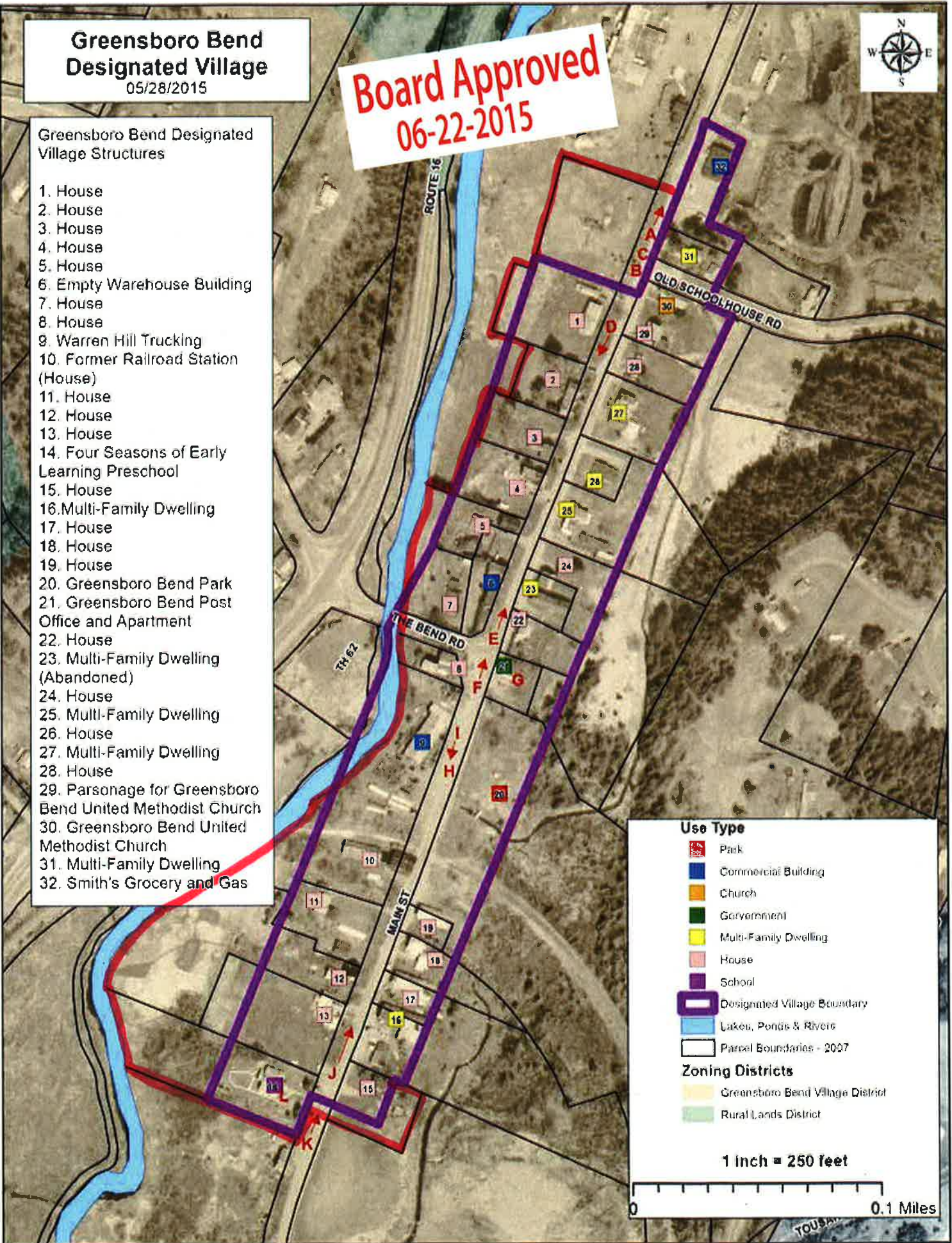
**Greensboro Bend  
Designated Village**  
05/28/2015

**Board Approved**  
**06-22-2015**



**Greensboro Bend Designated Village Structures**

1. House
2. House
3. House
4. House
5. House
6. Empty Warehouse Building
7. House
8. House
9. Warren Hill Trucking
10. Former Railroad Station (House)
11. House
12. House
13. House
14. Four Seasons of Early Learning Preschool
15. House
16. Multi-Family Dwelling
17. House
18. House
19. House
20. Greensboro Bend Park
21. Greensboro Bend Post Office and Apartment
22. House
23. Multi-Family Dwelling (Abandoned)
24. House
25. Multi-Family Dwelling
26. House
27. Multi-Family Dwelling
28. House
29. Parsonage for Greensboro Bend United Methodist Church
30. Greensboro Bend United Methodist Church
31. Multi-Family Dwelling
32. Smith's Grocery and Gas



**Use Type**

- Park
- Commercial Building
- Church
- Government
- Multi-Family Dwelling
- House
- School

- Designated Village Boundary
- Lakes, Ponds & Rivers
- Parcel Boundaries - 2007

**Zoning Districts**

- Greensboro Bend Village District
- Rural Lands District

1 inch = 250 feet

